



Practical instructions for the installation of

ALUCA dimension2

**In-vehicle racking systems
made of 100% aluminium**



Introduction

You have made a good choice by selecting an aluminium in-vehicle racking system from ALUCA. Thank you for demonstrating your confidence in our modern, safe product.

Our products are normally delivered by a shipping company. Please see our delivery and business terms and conditions. You can find these on the Internet at www.aluca.de.

Please check when accepting the goods that the number and type of goods supplied match the delivery note. If parts are missing, packaging appears to be damaged or the plastic film is torn, do not issue a receipt to the carrier. Complaints made retrospectively cannot be considered.

This installation guide offers advice on installation. As the vehicle installations are designed specifically for your application, you may not require fastening components for the installation. This installation guide is intended to serve as the basis for installation.

Please note that only professional installation will ensure a long service life for the equipment as well as high levels of safety. You should therefore read this installation guide carefully before installing the equipment.

Installation materials and tools:



The mounting kit for 1 drawer contains:

- 8 M8 x 70 hex screws
- 8 M8 x 40 hex screws
- 8 M8 self-locking nuts
- 24 washers, 25 x 45 x 3
- 8 spacer sleeves, 8.2 x 12 x 20
- 8 M8 x 11 drive-in nuts
- 8 M6 x 25 countersunk screws
- 8 underfloor drawer centre punches



The mounting kit for 2 drawers contains:

- 12 M8 x 70 hex screws
- 12 M8 x 40 hex screws
- 12 M8 self-locking nuts
- 36 washers, 25 x 45 x 3
- 12 spacer sleeves, 8.2 x 12 x 20
- 12 M8 x 11 drive-in nuts
- 12 M6 x 25 countersunk screws
- 12 underfloor drawer centre punches

The fixing material to fasten the floor panel to the vehicle body is supplied with the floor panel or will need to be ordered separately.

Step 1:



Prepare the vehicle for installation.
Please remove the rubber floor if necessary.

Then insert the floor panel diagonally inside the vehicle.

Step 2a:



Floor panels without lashing rings

Mark the fixing points of the holes used to screw the floor panel to the vehicle bodywork.

When drilling through the floor panel and the bodywork, avoid any parts of the frame or electrical, hydraulic and fuel lines running along the underside of the vehicle.



Step 2b:



Floor panels with lashing rings

Attach the floor panel using the plastic plates supplied with the floor panel.

Step 3:



Remove the drawers from the housings.

To do this, open the drawers to the stop, press in the metal plates to the right and left of the slides until the lock is released. The runners can now be separated and the drawer removed.

Installation is performed in reverse order.

Step 4:



Place the housing in the vehicle and align it on the floor panel.

Step 5:



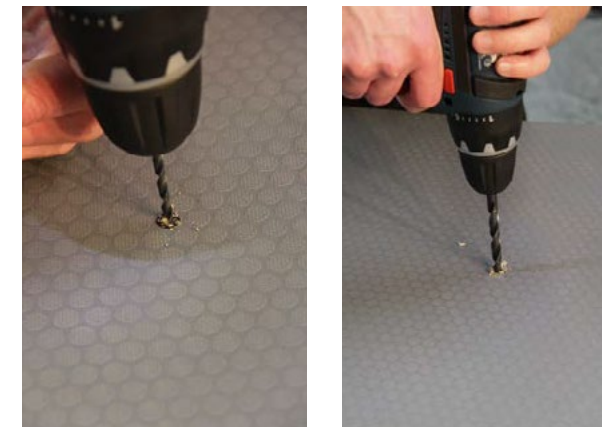
Mark the fastening points for screwing the floor panel to the vehicle body.

Caution: use the hole in the frame with an 8 mm diameter.

Now, remove the housing and the floor panel from the vehicle.

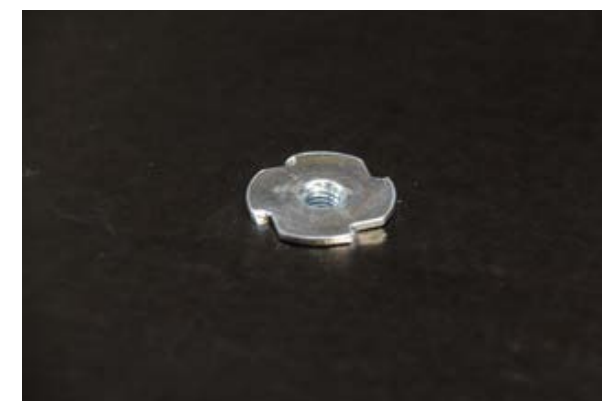
The floor panel can remain in the vehicle if the ALUCA dimension2 is screwed through the vehicle body!

Step 6:



Pre-drilling

From above, drill a hole of 11 mm diameter through the floor panel. Insert the M8 drive-in nuts into the holes from below.



Put the floor panels back into the vehicle (smooth side down) and align them.

Step 7:



Place the housing in its location and screw it down.

The black spacer sleeves are required for this, as these go between the two frame sections to avoid damaging the frame when tightening the screws.



Step 8:



Mark the points for fastening the housing to the cover plate.

For this, insert the supplied centre punches into the 6 mm diameter holes in the housing.

Place the cover plate on this and centre punch it.

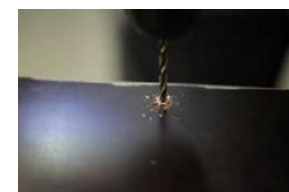


Step 9:

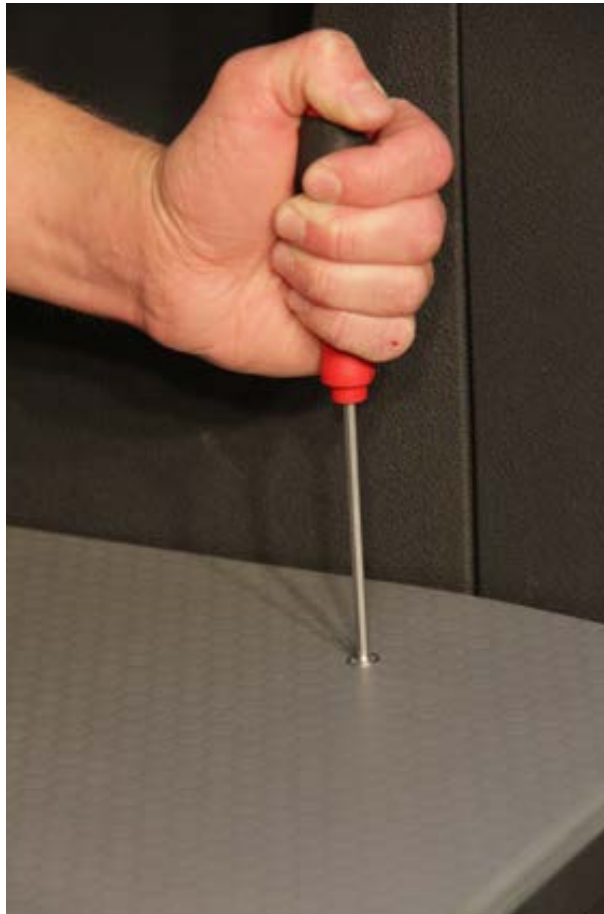


Take the cover plate out of the vehicle and remove the centre punches.

From below, drill the marked points of the cover plate using a 3 mm drilling bit and then from above with a 6 mm drilling bit. The holes must then be countersunk.



Step 11:



Screw the cover plate to the housings [counter-sunk screws].

Vacuum up all filings after installation to avoid any subsequent corrosion.

Step 12:



Reintroduce the drawers using with the slides into the housing and secure. [\[See disassembly\]](#)

Optional accessories

Anti-jamming device:



As an accessory, we recommend installing an anti-jamming device in each drawer.

These can be ordered [from a height of 150 mm] and mounted afterwards.

Side panels:



You can also order optional side panels for the ALUCA dimension2. These are not installed as standard.

To avoid disturbing the equipment when screwing it in, this must be attached by the installer.

ALUCA BOXXen drawer:





Technical Data

Load-bearing capacity of the heavy duty drawers

The load-bearing capacity of the heavy duty drawers with steel runners is 80 kg for an evenly distributed load up to a width of 705 mm.

When loading, even distribution of the loads must be ensured.

The load capacity of the entire dimension2 is 700 kg.

Installation instructions

Installing the floor panel

To perform the installation safely and without damaging the floor of the vehicle, we recommend using 12 mm of strong ALUCA waterproof bonded laminated wood panel, with a slip-resistant surface. Depending on the type of vehicle, the floor panel comes in one or two pieces. Multi-piece panels are connected using tongue and groove or notch and shoulder systems.

Before laying the floor panels, we recommend placing two to three layers of rubber cement on the floor ribs, of approximately 5 mm each. The additional circumferential edge sealing gives the floor panel a stable, springy coating and prevents moisture penetrating between the floor panel and the floor of the vehicle. Seal holes that run to the outside through the floor of the vehicle with Teroson underbody coating or similar product.

Please note that press clamping plates are not suitable for attaching in-vehicle racking systems; screw fittings may be pulled through the floor, endangering you and your employees.

Installing the side wall panels

The side walls are supplied as a perfect fit [cut to size] for your vehicle. Before installing the side walls, we recommend applying a thin layer of silicone to the supporting surfaces.

They are attached to the vehicle rails with self-tapping screws.

Vehicle operation:

At regular intervals, about every 5,000 km, as well as after an emergency stop or accident, check the fastening points of the in-vehicle racking system on the floor and the side connections (rails) and lashing points. For repairs, only use original spare parts from ALUCA.

Before driving the vehicle, check the permissible payload. Keep in mind that the in-vehicle racking system is part of the payload. Pay attention to the axle loads stipulated by the manufacturer. Avoid one-sided weight distribution in the vehicle.

Installations in passenger cars and vans, which are securely fastened in the load space, are regarded as cargo. For loads, there are no traffic rules that require acceptance by recognised experts or require an entry in the log book. The exception may be public authorities or local authorities.

Cleaning/Maintenance:

ALUCA in-vehicle racking systems are manufactured from high-quality aluminium. This material does not need painting. It is therefore easy to clean and this can be done inside the vehicle. Use the ALUCA care spray available from us, or a comparable product for the care of metal surfaces.

When replacing or implementing ALUCA in-vehicle racking systems in other vehicles, the disassembled racking block can be cleaned with a high pressure steam cleaner. The drawer runners must be greased afterwards. Ideally using ALUCA maintenance oil.

Do not use steel wool, steel brushes or similar because the abrasion of steel forms rust. All surfaces should be treated with ALUCA care spray after each cleaning. This is dirt-repellent.



**For more information and accessories, please
consult our main catalogue, our website or contact
the ALUCA consultant in your area!**

ALUCA[®]

ALUCA GmbH

In-vehicle racking systems made of 100% aluminium

Westring 1
74538 Rosengarten
Germany

T +49 791 950 40-0
F +49 791 950 40-20
E info@aluca.de
www.aluca.de