

ALUCA®

Lightweight mobile storage systems



Improving every handling

www.aluca.de





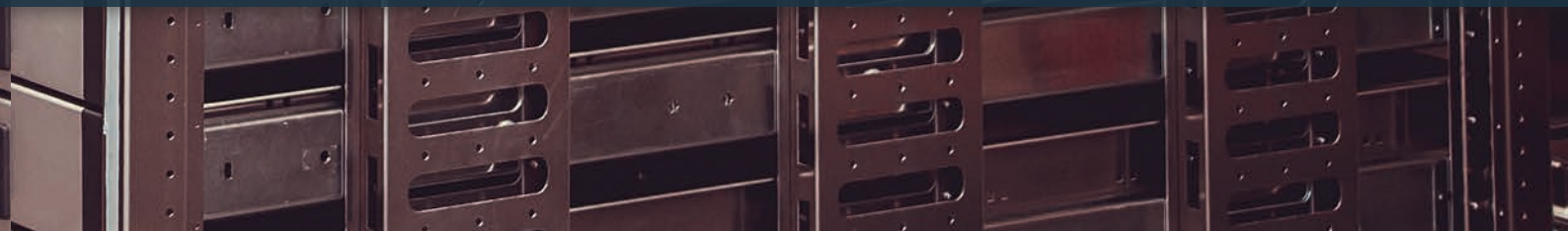
Welcome to ALUCA

ALUCA manufactures light-weight, strong and safe systems for those who are on the road each day. We offer the right solution for any requirement. We use our considerable creativity and skill to develop individual products for our customers using 100% aluminium.

We want you to be convinced of the quality and individuality of our top-quality in-vehicle racking systems.

Our employees live the ALUCA philosophy and will amaze you as well:

"Lightweight mobile storage systems".



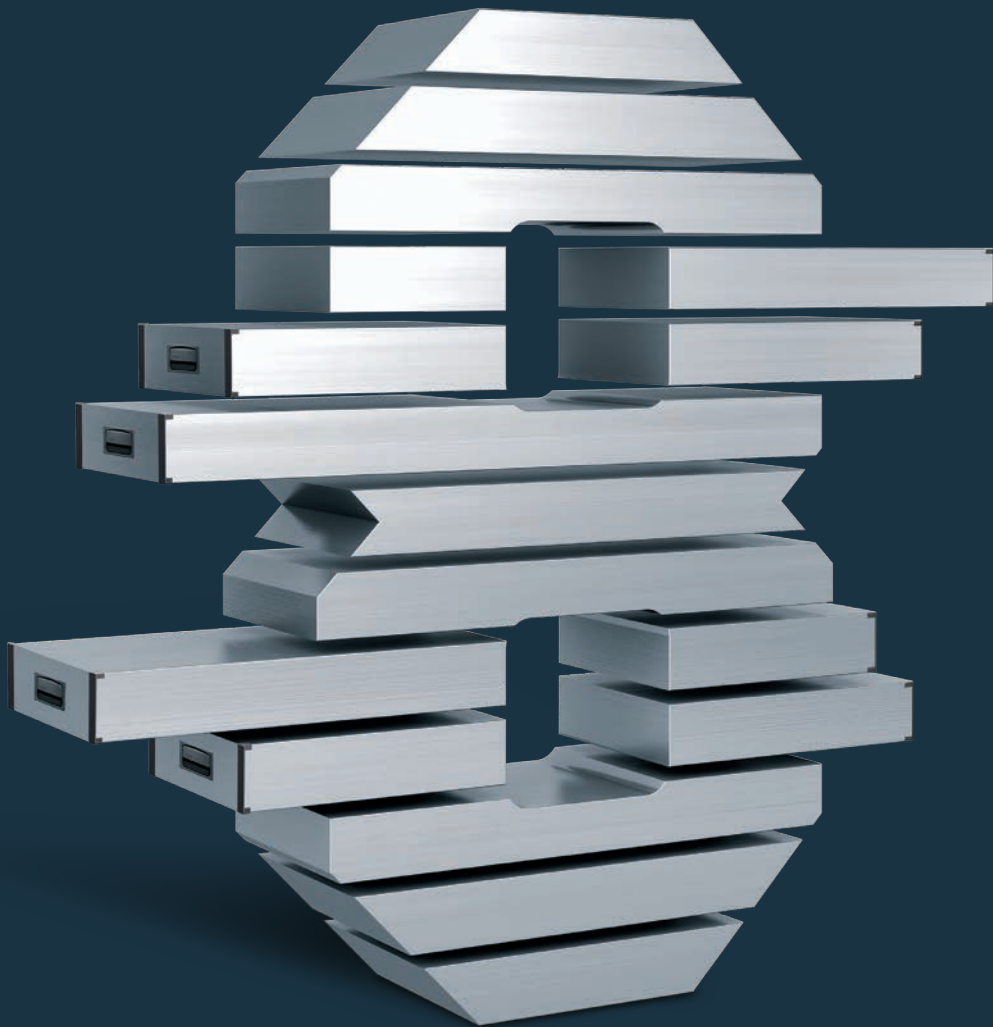
Contents

	Page		Page
<i>This is ALUCA</i>	6	<i>Modules</i>	40
This is ALUCA	7	Your benefits	41
What we stand for	9		
Why aluminium	11		
What else do we do	13		
		<i>ALUCA box system</i>	42
		Your benefits	43
<i>ALUCA dimension2</i>	14		
Downsizing	17		
Your benefits	18		
Features	20		
Accessories	20		
		<i>Load securing</i>	44
		Your benefits	46
<i>System ALUCA</i>	22	Interior protection	47
Your benefits	24	Floor panels	48
System overview	26	Load securing	50
Components	28		

ALUCA®

The 8-year premium warranty

If you compare, you'll see
there's no comparison.



www.aluca.de

This is ALUCA

Our customers have a wide range of requirements. The demand for mobile servicing is increasing and creating ever more challenges. For 25 years we have been providing the right solutions with our aluminium in-vehicle racking systems and matching services. We develop and plan your individual solution, taking

costs, processes, the environment and safety into account.

We are 100 % convinced of the quality of our racking systems and of aluminium – that's why we give you a unique 8-year warranty.



**INDIVIDUAL
ADVICE**



**PREMIUM
QUALITY**



PLANNING



**PREMIUM
GUARANTEE**



**CERTIFIED
ASSEMBLY**



**FLEET
SOLUTIONS**



**ELECTRICAL
ACCESSORIES**



CRASH-TESTED



**SHORT
DELIVERY TIMES**



**CERTIFIED
BY VEHICLE
MANUFACTURERS**

What we stand for

We place the highest demands on our products and projects. Highly-motivated employees and clearly-structured procedures ensure processes run smoothly and that manufacturing quality remains consistent.

Individual plans are created based on customer requirements and coordinated with the customers themselves.

After approval is given, individual components are made from sheet aluminium and profiles. The next step is to assemble these components to form an in-vehicle racking system. After a quality check at the factory, certified and qualified specialists install the system in your vehicle.

100% quality and customer satisfaction.

Why aluminium?

We produce our in-vehicle racking systems entirely from aluminium and intend to continue to do so in the future. Aluminium offers an enormous number of advantages:

WEIGHT



Aluminium is three times lighter than steel and has a perfect strength-to-weight ratio. That is why aluminium is used for the most challenging transport sectors, e.g. railways, aviation and space travel.

STRENGTH



The aluminium alloys used by ALUCA have the strength of construction steel and are twice as strong as fibre-reinforced plastic, four times stronger than thermoplastics and ten times stronger than plywood.

CORROSION



Aluminium is a very resistant material which forms an oxide layer on the bare metal shortly after manufacture which prevents corrosion.
An ideal material for a long service life, even in tough and humid environments.

TORSION



Typical torsion of the bodywork is absorbed by the firmly attached aluminium components and does not place a load on the connection points of the vehicle. This advantage contributes to the longevity of ALUCA products, especially on building sites and in off-road areas.

RECYCLING



Aluminium is a valuable raw material. When recycled properly 100% of the product can be reused. For petroleum-based materials, we speak of "downcycling" because only lower-value products can be created from the recovered raw material.

FURTHER ADVANTAGES



EASY TO PROCESS



INCREASED PAYLOADS



EASY-CARE



LOW-MAINTENANCE

What else do we do?

Loads cannot always be secured "off the peg". That's where the professionals from ALUCA's special parts division come in.

To meet customer requirements exactly, we design and manufacture precisely-fitting and user-friendly

special components for customised in-vehicle racking systems, including special drawers, brackets, special bins, mountings and brackets for customer-specific materials and tools, as well as heavy-duty drawers capable of holding up to 1 tonne.



ALUCA dimension2

With its roomy drawers, ALUCA dimension2 is perfect for organisation and allows access to the in-vehicle racking system at all times even though

the cargo space is fully loaded. This solution allows all equipment, materials and accessories to be stored ergonomically.



ALUCA DIMENSION2

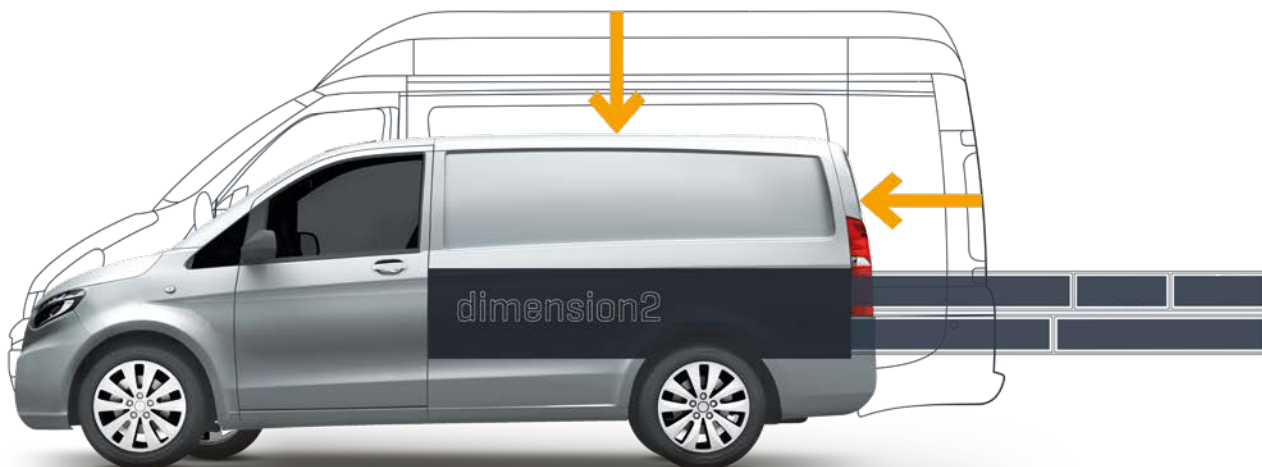
Downsizing

Demand for compact city runabouts is increasing.

Increasing traffic densities, a lack of parking space in town centres and cost pressures can lead to large trucks being replaced by more compact commercial vehicles. The smaller the cargo space, the more flexible and efficient the in-vehicle racking system has to be.

ALUCA dimension2 offers many possibilities to meet these demands and brings order and ergonomics to the compact vehicle class.

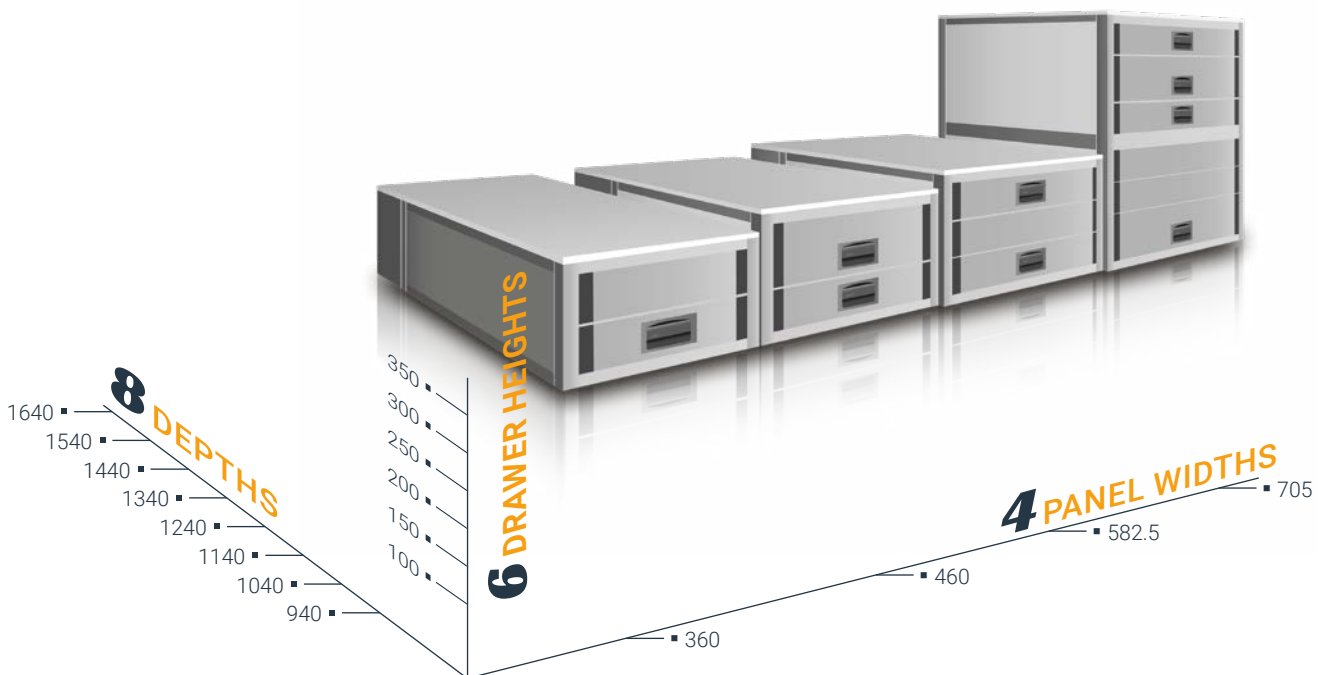
Drawers for ALUCA dimension2 come in many sizes – there is an individual solution for every application.



YOUR BENEFITS

- ✓ Fill your cargo space completely
- ✓ Ergonomic loading and unloading of drawers outside the vehicle
- ✓ Materials easy to remove thanks to full-length drawer rails
- ✓ Cargo secured in seconds
- ✓ Fully usable cargo floor: Cover plate can be loaded to 700 kg
- ✓ Efficient use of space thanks to high distribution loads of up to 80 kg per drawer

ALUCA dimension2 offers you innumerable combination options.





ALUCA dimension2



ALUCA dimension2

Features

- Fully extendible, heavy-duty rails
- Drawer runner can be separated to remove the drawer (for maintenance and cleaning)
- Drawer distribution load of up to 80 kg
- Anti-trap protection for improved work safety on units above 150 mm (optional) at the front
- With an ergonomic, heavy-duty drawer handle
- Drawers with double-sided locking mechanism
- Anti-slip mats, dividers and plastic boxes keep things tidy and offer quick access
- Low centre of gravity for neutral handling characteristics



ACCESSORIES FOR ALUCA dimension2

INSET BOX SETS

- Each set divides one drawer
- Made of impact-resistant plastic
- Ideal for drawers with 100 mm high fronts

DIVIDER AND COMPARTMENT SETS

- Each set divides one drawer
- Divider dimensions can be changed and increased





System ALUCA

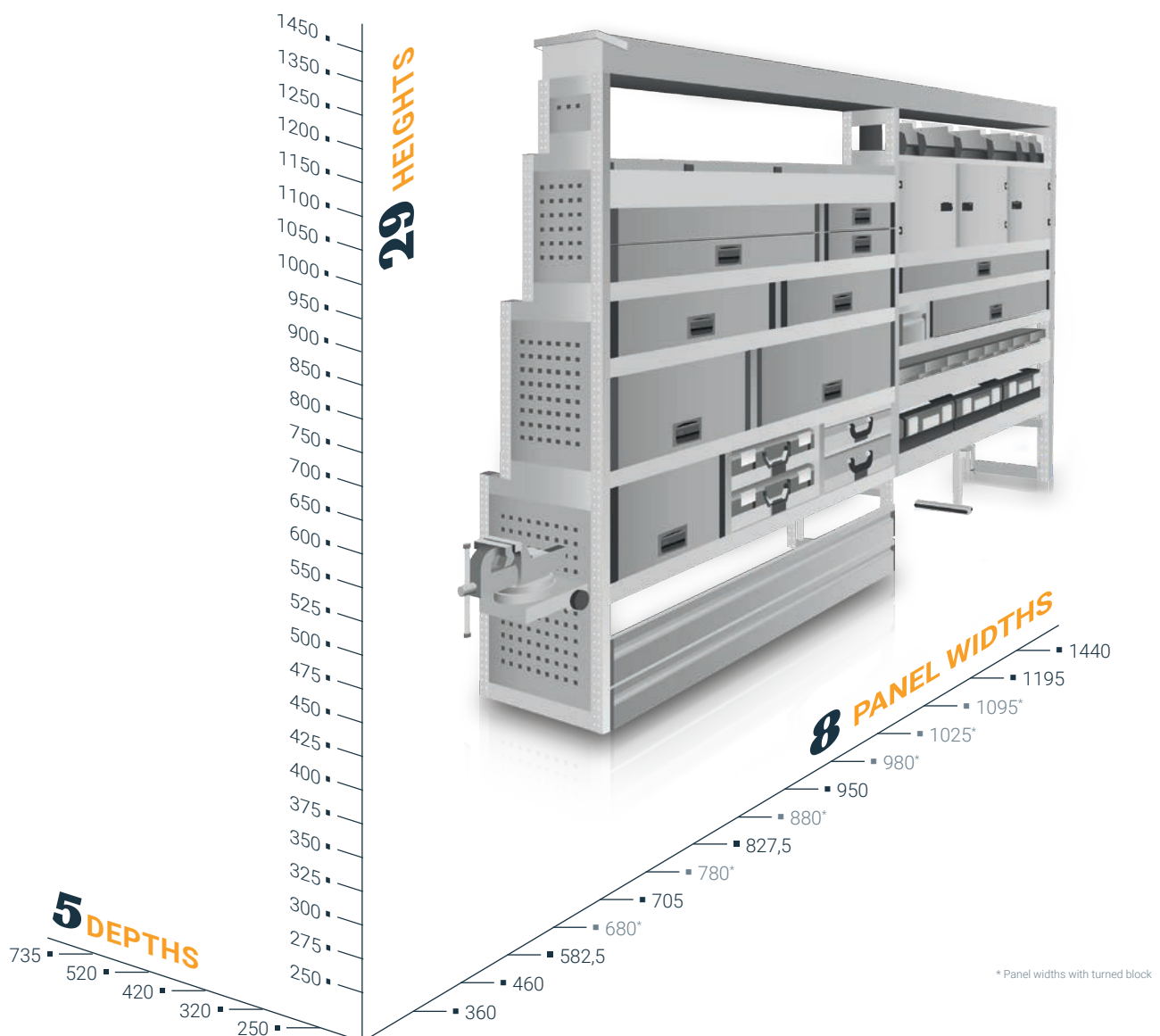
ALUCA's modular system is impressive. The optimal combination of components means you get a system that meets all your requirements.

This will turn your vehicle not only into a mobile workshop or mobile warehouse but at the same time will ensure your load is safe.

YOUR BENEFITS

- ✓ Order and functionality in the vehicle
- ✓ Maximum customization of vehicle racking systems
- ✓ Flexible working in and on the vehicle
- ✓ The ideal system solution for any industry
- ✓ Crash-tested system for passenger safety and protection
- ✓ Comprehensive range of accessories

ALUCA components are available in numerous dimensions and can be combined in virtually any configuration. That way, any vehicle can be configured perfectly.





System overview





- 1 Supporting frame
- 2 Side wall
- 3 Shelf and bottom flap
- 4 Shelf base
- 5 Drawers
- 6 Aluminium box
- 7 Box shelf
- 8 Box storage
- 9 Box restraint system
- 10 Long goods tray
- 11 Shelf tray
- 12 Door element
- 13 Flipped block
- 14 Workbench top
- 15 Raised edge for workbench top
- 16 Foldable workbench
- 17 Parallel vice
- 18 Hose bracket
- 19 Lashing rails
- 20 Gas cylinder transport kit
- 21 S-BOXXes
- 22 Shelf trays
- 23 T-BOXXes



SUPPORTING FRAME

- Heavy-duty aluminium design
- Components are assembled using a uniform system of holes in a 25 mm grid
- **29 heights**
from 250 to 1450 mm
- **5 depths**
250, 320, 420, 520, 735 mm
- Supporting frame width 30 mm
- Max. bay load 250 kg



SIDE WALL

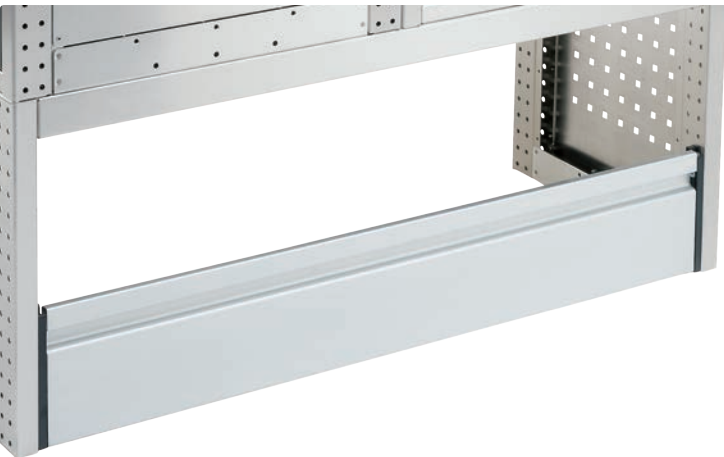
- Covers the side of the racking system
- With ALUCA system perforations
to add additional tool holders
- Material thickness 1.5 mm

ACCESSORIES FOR SUPPORT FRAMES



HOLDERS FOR ADJUSTABLE WRENCHES

- Simple, fast and space-saving transport security for wrenches, manhole cover hooks, etc.
- Includes aluminium brackets for supporting frames and matching PE tubes
- Available in various depths
- Rubberised lashing optional



SHELF AND BOTTOM FLAP

- Made of torsion-free anodised aluminium profile
- Can be used as a bottom flap for shelf and shelf base
- Flap for shelf and shelf base swings fully down
- Heights: 125 and 175 mm



FLAP FOR SIDE SUPPORTING FRAMES

- Makes it easy to remove long and narrow parts as well as bulky goods
- Or can allow direct access to technical fixtures



SHELF BASE

- **8 widths**
360, 460, 582.5, 705, 827.5, 950, 1195, 1440 mm
- **3 depths**
320, 420 and 520 mm
- 100 mm raised edges around the back and sides
- **Load capacity**
 - Max. 40 kg distributed load without reinforcement
 - Up to 60 kg distributed load with reinforcement



DRAWERS

- Front panel made of anodised aluminium profile
- Ergonomic, heavy-duty drawer handle
- Optional lock (can be retrofitted)
- Double-sided locking mechanism
- **Full, 100% extension**
with arrester when opened completely
- **Separable runner**
For easy removal of drawer
(e.g. for cleaning or repairs)
- **Division options and accessories**
Anti-slip mats, dividers and compartment walls, plastic boxes
- **8 widths**
360, 460, 582.5, 705, 827.5, 950, 1195, 1440 mm
- **4 depths**
320, 420, 520 and 735 mm
- **Drawer front heights**
100, 150, 200, 250, 300 mm
Other heights and drawer attachments available on request
- **Load capacity (distributed load)**
 - with aluminium pull-outs up to 40 kg
 - with heavy-load pull-outs up to 705 mm wide
max. 80 kg
 - with heavy-load pull-outs up to 827.5 mm wide
max. 60 kg

ACCESSORIES FOR DRAWERS

DIVIDER AND COMPARTMENT SETS

- Each set divides one drawer
- Divider dimensions can be changed and increased



INSET BOXES

- Made of impact-resistant plastic
- In 6 different sizes
- Drawers and aluminium bins
- Available in sets that divide one drawer
- Divider dimensions can be changed and increased







ALUMINIUM BOX

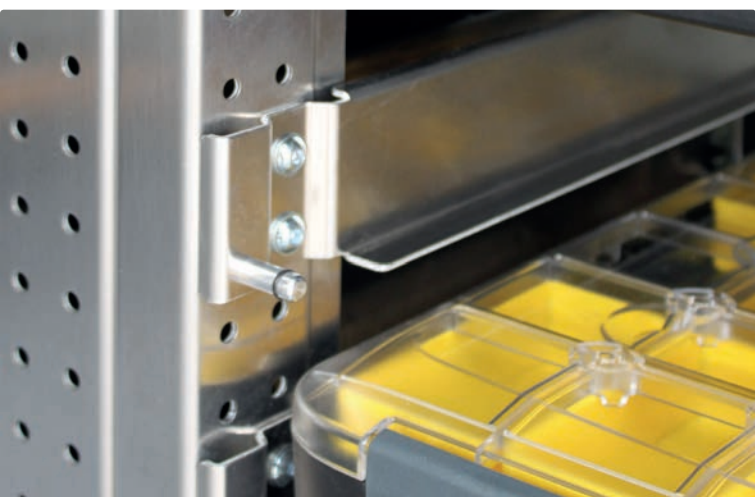
- Light and robust
- Ergonomic handle
- Secure lock
- Can be used with one hand
- Available in heights 66 mm and 115 mm
- Optionally available with 2 dividers and 2 compartment walls, tool insert, inset boxes or burner nozzle insert





BOX SHELF

- For aluminium boxes, T-BOXXes and L-BOXXes
- Comfortable one-hand use
- Double-sided locking mechanism
- Optional lock (can be retrofitted)
- Width: 460 mm
- Depths: 420, 520 mm



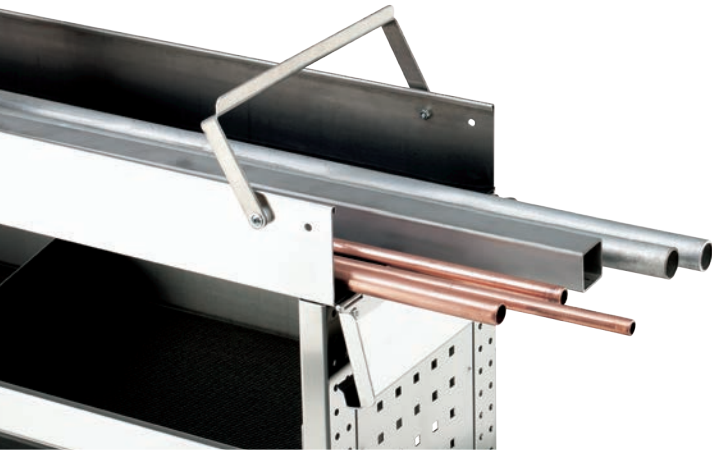
BOX STORAGE

- For ALUCA Aluminium boxes, T-BOXXes, M-BOXXes, L-BOXXes 102 and L-BOXXes 136
- Lock pin stops box falling out
- Depth: 420 mm



BOX RESTRAINT SYSTEM

- Tensioner to secure machinery boxes, product boxes or bins
- Infinitely adjustable
- Locking lever arrestor
- Robust construction made of anodised aluminium profile and angle profile
- Height: 275 mm
- **8 widths**
360, 460, 582.5, 705, 827.5, 950, 1195, 1440 mm
- **3 depths**
320, 420 and 520 mm



LONG GOODS TRAY

- Variable lengths from 1760 to 3200 mm
- Height: 100 mm
- Flap for easy removal of long tools and materials



TOP-MOUNTED BIN

- Three variable lengths:
900 - 1665, 1625 - 2915, 1650 - 3165 mm
- Height: 100 mm
- No side flap

ACCESSORIES FOR LONG GOODS BINS & TOP-MOUNTED BINS

STAND-OFF

- Adjustable-height stand-off for installing long goods bins and top-mounted bins on the in-vehicle racking system
- **Ranges of adjustment**
Height 150 - 250 mm, 250 - 450 mm
Depth 200 mm



BRACKET

- With variable angles for installing long goods bins and top-mounted bins on vehicle cross beams





SHELF TRAY

- **Shelf trough, high**
Lip: rear 100 mm, front 100 mm
- **Trough tray, low**
Lip: rear 100 mm, front 50 mm
- **8 widths**
360, 460, 582.5, 705, 827.5, 950, 1195, 1440 mm
- **5 depths**
250, 320, 420, 520, 735 mm
- Can be divided individually using tray dividers
- Ideal for ALUCA shelf bins
(featured in ALUCA box system)



DOOR ELEMENT

- Lockable door element made of aluminium
- Stop can be fitted on the left or right
- Width: 460 mm
- 16 heights: from 300 to 1300 mm
- Custom sizes are available upon request
- Clothes rail with hooks optionally available



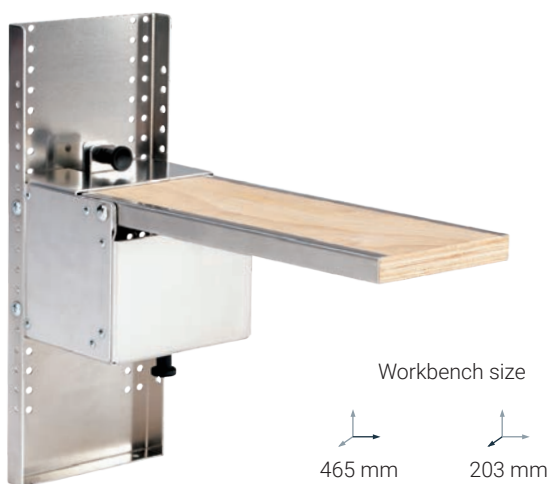
FLIPPED BLOCK

- Numerous combination options in ALUCA system
- Ideal for use outside the vehicle, e.g. through the open sliding door
- Width: 360 mm
- 4 depths: 320, 420, 520 and 735 mm



WORKBENCH TOPS

- Birch multiplex bench
- With and without raised edge
- Glue-laminated in accordance with BFU 100
- Surface oiled several times
- Flush connection to system
- For mounting on supporting frames



FOLDABLE WORKBENCH

- Multilayer work bench glued and edged with stainless steel U-profiles
- Suitable for vices, with or without turntable (jaw widths 100 and 125 mm)
- Safety lock

Can be retrofitted for many different systems.



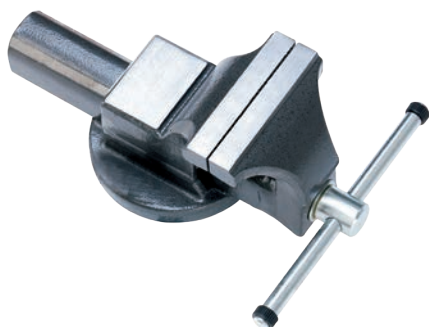
FOLDABLE WORKBENCH WITH SUPPORT FOOT

- **for vehicles with low loading lip**
 - Height from ground to installation level in vehicle between **490 and 670 mm**
 - Foldable with high console
- **for vehicles with high load lip**
 - Height from ground to installation level in vehicle between **640 and 820 mm**
 - Foldable with short console



REMOVABLE WORKBENCH

- Birch multiplex bench
- Glue-laminated in accordance with BFU 100
- Side-edged using stainless steel U-profiles
- Accurate and maintenance-free positioning of the worktop
- Worktop lockable
- Integrated into crossbar (except 320 mm depths)
- Vice, turntable, support foot and spring lock available as accessories



PARALLEL VICE

- Jaws made of hardened steel
- With tubular jaws
- Available in 3 sizes: 100, 125 and 135 mm jaw width



REMOVABLE VICE HOLDER

- For vices with jaw widths of 125 mm
- Available with or without turntable
- Made of stainless steel and aluminium
- For mounting on vehicle floor
- Without end stop



HEAVY LOAD SLIDING DRAWER

- planar load up to 200 kg
- safe guidance of rails as a result of flexible rollers
- 2/3 extendable
- 4 system widths:
320, 420, 520 and 735 mm
- 10 system depths:
705, 780, 827.5, 880, 950, 980, 1025, 1095, 1195, 1440
- with factory-installed lashing points for safe transport
- cover plate of 12 mm plywood with anti-slip coating



HEAVY LOAD SLIDE (PERSONALISED DESIGN)

- Available in different lengths and widths
- Surface load from 200 to 1000 kg
- Heavy load guides extend fully

Custom-made items. Just ask us!



GAS BOTTLE SHELF FOR REFRIGERANTS AND PROPANE

- For 6 or 8 bottles max. 260 mm in diameter
- Lashing strap with ratchet and fittings, plus aluminium lashing rails included in delivery
- Shelving fully assembled
- Tool holders, document compartments, hose holders, etc. can be mounted on the rear

Heavy weight slide optional.

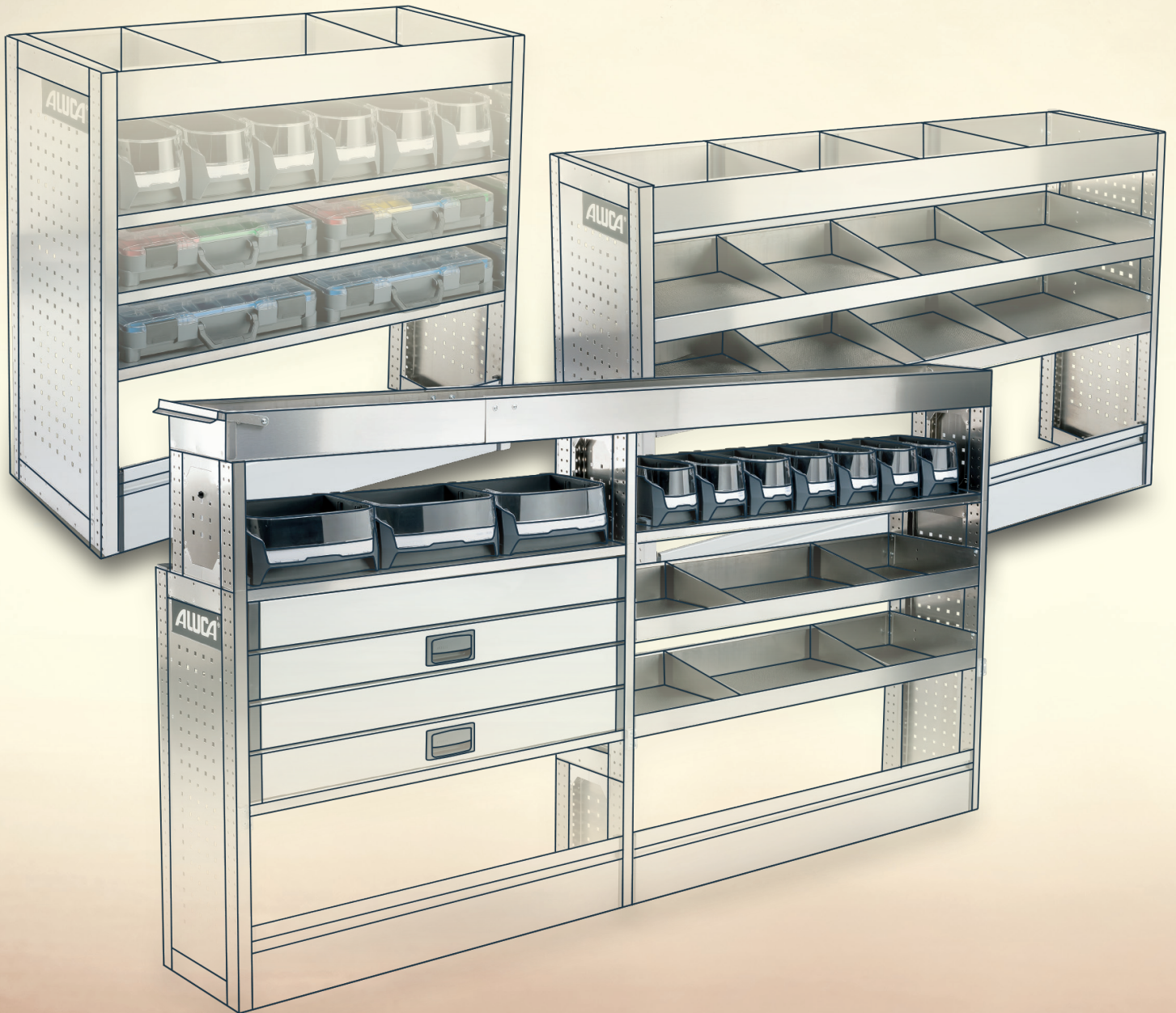
ALUCA®

The 8-year premium warranty

If you compare, you'll see
there's no comparison.



www.aluca.de



Modules

Our ready-to-install modules for quick-deciders have proven themselves with customers from a wide range of industries. Turn your van into a well-organised service vehicle. Speak to your local ALUCA partner and find out which of the 39 pre-configured modules will fit your vehicle.



PUBLIC OFFICES/
AUTHORITIES



CONSTRUCTION
INDUSTRY



PUBLIC UTILITIES/
ENERGY SUPPLIERS



ELECTRIC



HEATING,
VENTILATION AND
AIR CONDITIONING



AGRICULTURE
AND FORESTRY



SURVEYING
AND MAPPING



SERVICE
PROVIDERS

YOUR BENEFITS

- ✓ Available direct and easy to order
- ✓ Suitable for many industries and vehicles
- ✓ Short delivery times
- ✓ Comes pre-assembled allowing quick and easy installation in your vehicle





ALUCA box system

ALUCA boxes are a universal and individual storage system for flexible use in ALUCA and ALUCA dimension2 in-vehicle racking systems. Tools and equipment can be stored safely in the boxes.

- ✓ Flexible and compatible with System ALUCA and ALUCA dimension2
- ✓ They keep the vehicle neat and tidy.
- ✓ Shortages can be detected immediately and rectified.
- ✓ Work flows are more effective

If you would like more information about our range of boxes, please ask your local ALUCA contact person.



ALUC4
SYSTEM

深南
Shennan



Load securing

The ALUCA product range includes various components for the cargo hold, such as floor

panels, side panels and load restraints. Ask your ALUCA service partner for advice.

YOUR BENEFITS



Protection of the vehicle bodywork and floor



Increased vehicle resale value





ALUMINIUM SIDE WALL CLADDING

- Made of perforated aluminium sheet
- 1.5 mm material thickness
- With ALUCA system perforations
- **Extremely sturdy**
- For mounting tool holders, bins, shelves, etc.
- To protect the vehicle bodywork
- For all standard vehicle models
- Individual items can be supplied: cladding for rear doors and tail gates or for other areas in the vehicle



PLASTIC SIDE WALL CLADDING

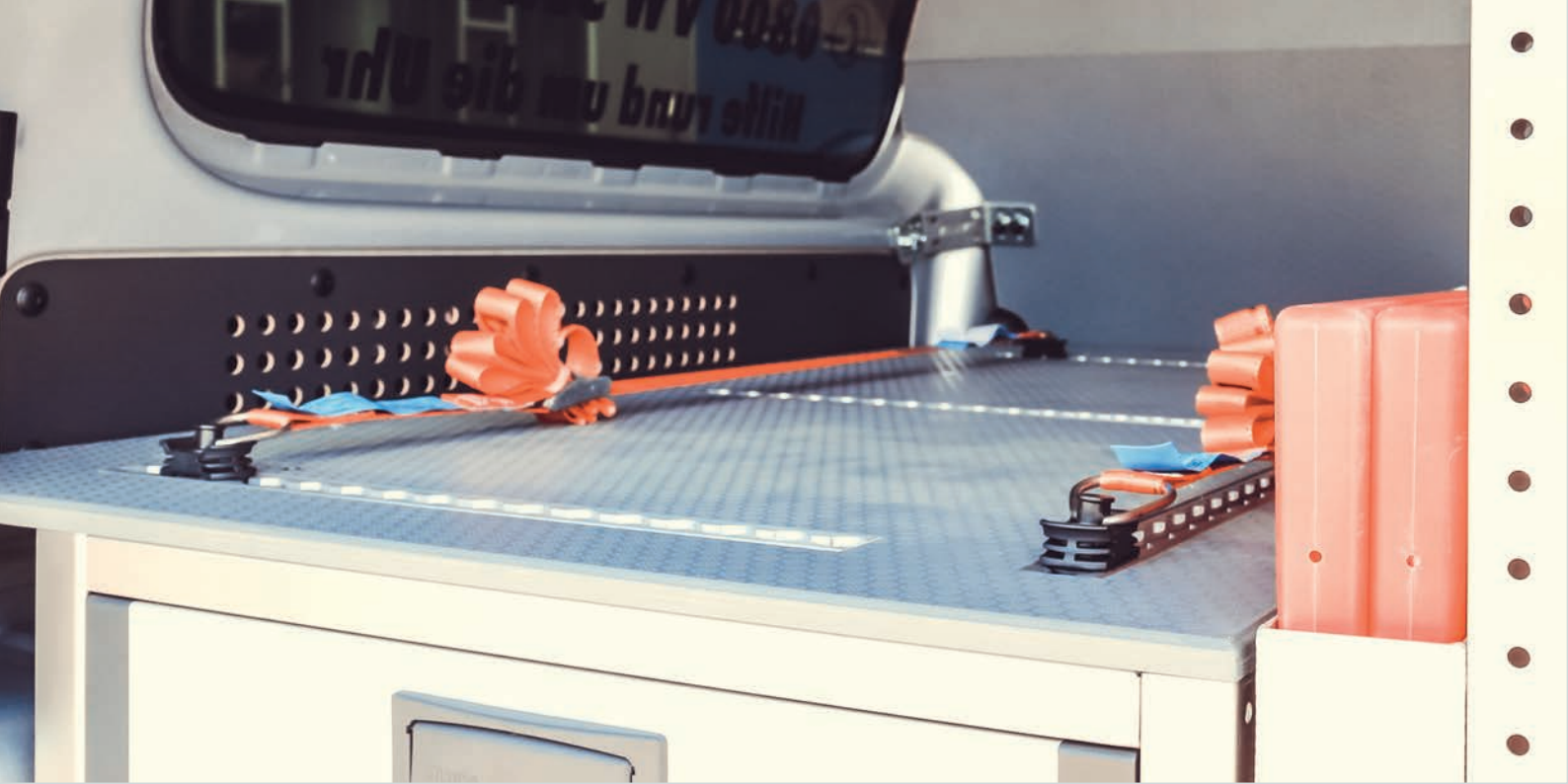
- Made of 4 mm polypropylene (PP), light grey
- rot- and moisture-resistant
- Suitable for foodstuffs
- 50% lighter than plywood
- Edges chamfered, incl. holes, for direct attachment to the vehicle
- Assembly using self-tapping screws, brackets and clips (included)



PARTITION WALL PROTECTION

- Perforated aluminium sheeting on aluminium frames
- Includes 2 lashing rails and fastening materials
- Lashing straps need to be ordered separately
- Available for all vehicle types
- They come in 2 standard sizes: 950 x 950 mm and 1100 x 1000 mm

Custom-made items.
Please contact us!



FLOOR PANELS

- 12 mm birch plywood supporting material
- Slip-resistant surface using phenol resin
- Underside of panels with shelf rails to clear ribbing
- Depending on the type of vehicle, one or more pieces
- Flush-mounted aluminium kick-plates at rear and sides
- with edge-protection coating, moisture-repellent
- Original, lashing points can be used with caps from ALUCA
- Glue is suitable for outside areas in accordance with BS 6566, BFU100, DIN 68705, EN 636, DIN EN 1084 class A



COVER FOR LASHING TRAY

- Made of plastic, with lid





ALUMINIUM ROOF BOX

- ALUCA offers two different roof box systems
- Top-quality, anodised aluminium frame
- Very corrosion-resistant and durable
- Available for many vehicle types
- Suitable for vehicles with and without C-rails
- Low weight – 25 % lighter than comparable steel products
- Aerodynamic profile reduces wind noise and air resistance
- Full-width rear roller system
- Quick and easy to assemble
- No holes need to be drilled in the vehicle to install this product

ROOF BAR

- ALUCA offers two different roof bar systems
- Both have an aerodynamic profile to reduce wind noise
- Very sturdy construction
- Quick and easy to assemble
- Lockable on request

Available accessories

- Side supports for safe transport
- Pipe holder for roof rack
- Ladder clamp for roof rack



PIPE HOLDER FOR ROOF RACK

- ALUCA offers two different pipe holder systems
- Aluminium construction provides stability and low weight
- Firmly mounted system
- Suitable for many types of crossbars
- Max. weight capacity 50 kg
- End cap with catch provides maximum security and strength
- Approx. 15 minutes to install
- No holes are needed for installation
- Lockable
- Available in lengths of 2 to 6 metres



PLATFORM UNIT FOR ROOF RACK

- The platform offers additional loading space for the entire length of the roof box and roof bar
- Available for any length



LADDER LIFT

- ALUCA offers two different ladder lift systems
- Both systems are operated from the ground
- Heavy ladders can be easily fitted on the vehicle roof
- The ergonomic design of the system reduces the strain on the back and the shoulders
- Safe loading and unloading in seconds
- Secure and lockable
(padlock not supplied with the product)
- Available for many commercial vehicles



LADDER CLAMP FOR ROOF RACK

- Made of strong composite materials
- Excellent corrosion protection
- Easy to assemble
- Suitable for up to 4 ladders
- Lockable
- Supplied in twos



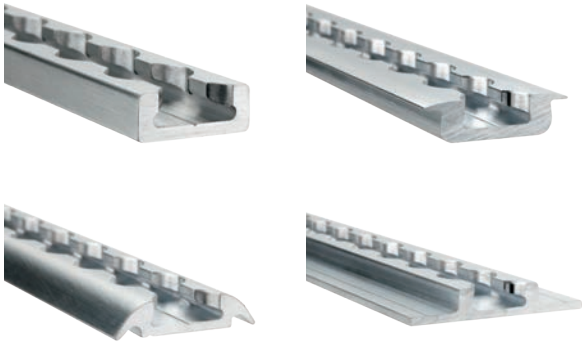
STEPS WITH RAM PROTECTION

- Made of aluminium with a weight saving of up to 65%
- Easy access to load space
- Ram protection for rear of vehicle
- Minor bumps are easily absorbed
- In a serious impact, the ram protection prevents damage to the vehicle
- No tipping from oblique impact angles
- Completely maintenance and wear-free
- Anti-slip step surface complies with UVV regulations
- High stability thanks to tubular construction
- Very protective thanks to maximum suspension travel



TAILGATE LADDER

- Mounted on the right-hand rear door of the vehicle
- Provides quick and safe access to the roof to secure cargo to the roof box or roof bar
- Wide rungs for a safe standing position on both feet
- No drilling required
- Available for most commercial vehicles
- 100 % stainless materials



ALUMINIUM LASHING RAIL

- **Screw-on design or floor panel fitting**
- Suitable for all lashing straps, with fittings and locking ratchets

ACCESSORIES FOR LASHING RAILS



ALUMINIUM LASHING POINT

- For flexible attachment in and on vehicle or vehicle equipment



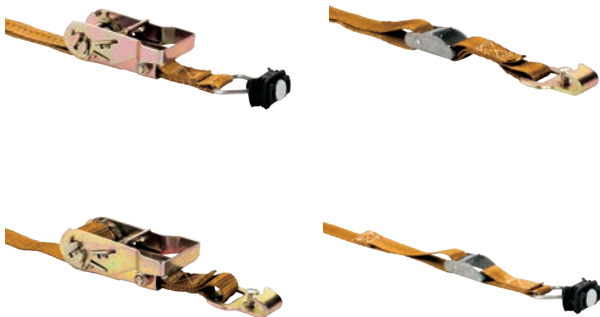
FITTING

- For lashing rails and points
- With slot for strap
- For loads up to 500 daN



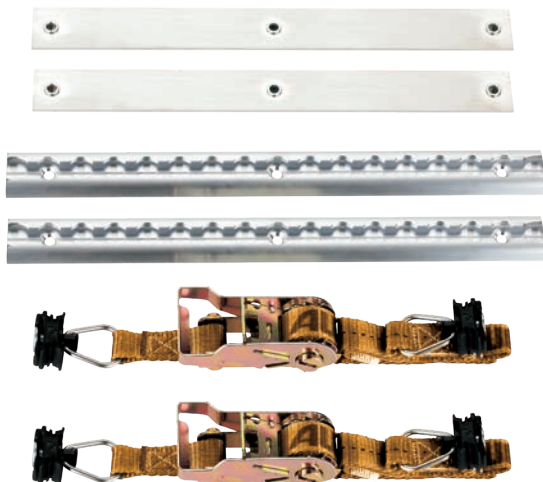
SCREW FITTING

- Made of galvanised steel
- For fitting on lashing rail for strong screw attachment of accessories
- M8 thread
- Available in 2 sizes



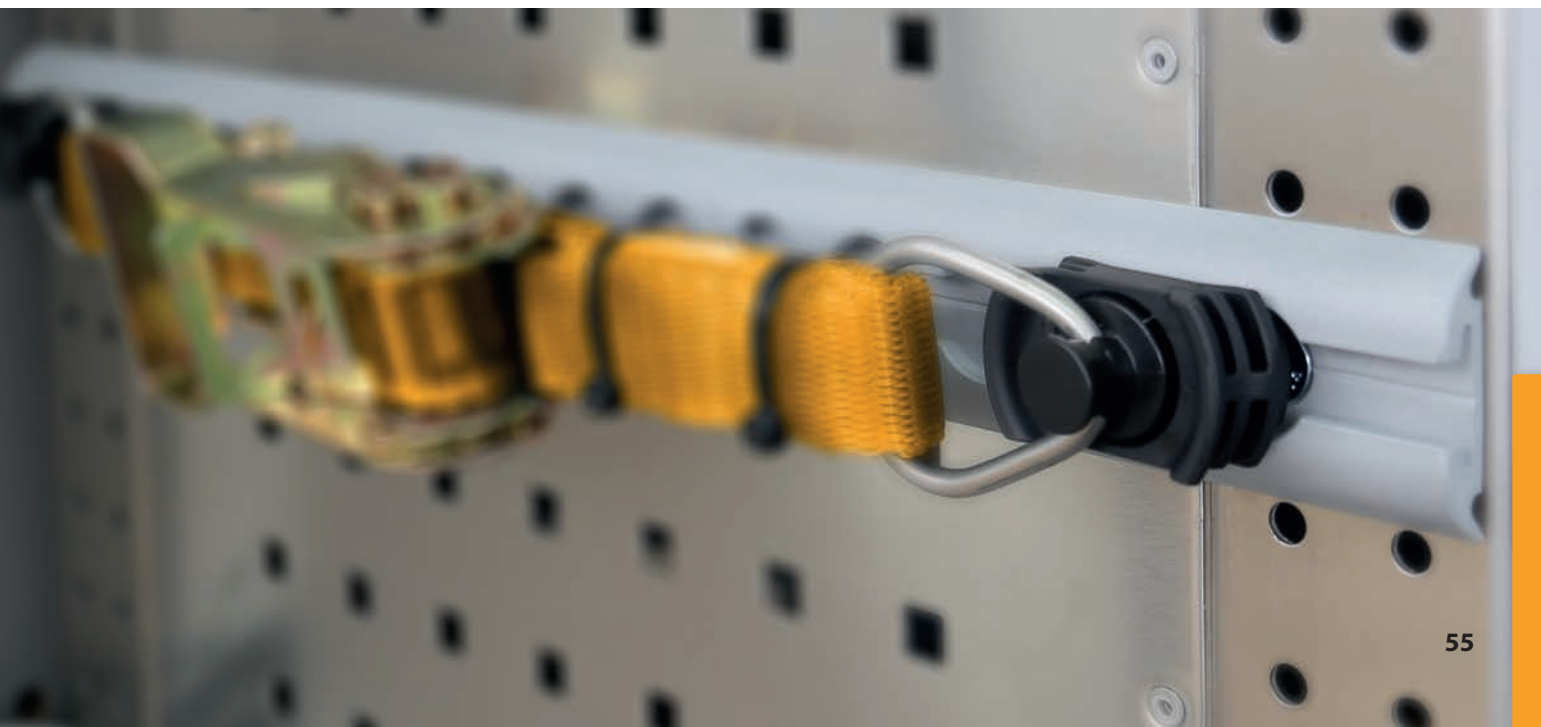
LASHING STRAPS AND TENSION BELTS

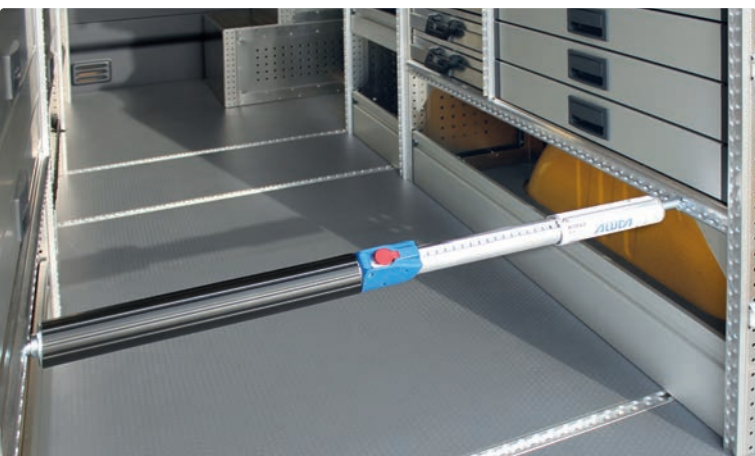
- Choice of fitting or buckle
- For use with lashing rails
- Tensioning force up to 300 daN
- All available in 3 lengths and different fixed end lengths



GAS CYLINDER TRANSPORT KIT

- In 2 versions for small or large gas cylinders
- Lashing rails
- Ratchet lashing strap, 1000 mm
- Cross beam as safe-bar
- Tensioning force up to 300 daN
- Available in 3 depths: 320, 420 and 520 mm





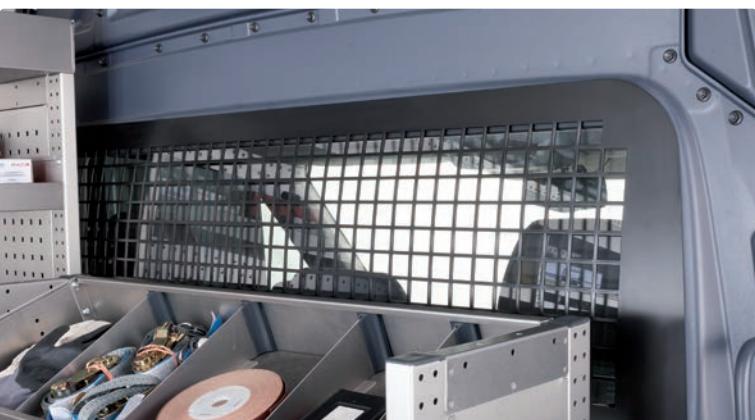
TELESCOPIC RATCHET

- Made of aluminium
- Quickly adjustable without tools
- Can be used vertically and horizontally
- Suitable for all lashing rails and rod rails
- 4 adjustment ranges available
650-900, 1250-1750, 1550-2050 and 2000-2500 mm



LOAD SECURING NET

- With all-round ratchet lock ring strap
- For lashing down different package shapes
- Available in different sizes



WINDOW GRILLE FOR PARTITION WALL

- Guaranteed protection of passengers in driver's cab
- Weather-resistant version
- Made of powder-coated aluminium
- Matt black to prevent reflections in windscreen and rear-view mirror
- Quick and easy refit
- Low weight
- Good view thanks to narrow frame and large, 30 x 30 mm holes



ANTI-SLIP MAT FOR DRAWERS AND SHELF BINS

- Structured, black mat insert
- Slip-resistant and noise-damping
- Sturdy, load-bearing quality
- Machine washable at up to 60°C using standard low-duty detergents
- 2.5 mm thick
- Available cut or in a roll



FINELY SERRATED MAT

- Suitable for protecting the long-goods or item bin
- Slip-resistant and noise-damping



ANTI-SLIP MATS, AVAILABLE IN ROLLS

- Floor mats for transporter
- Extremely sturdy and resistant to tearing
- 4.5 mm thick
- Very high friction coefficient of up to 10 t/m²
- Depending on friction surface – μ 0.94-1.49
- Damps noise and insulates against cold
- Sealed surface so no absorption of liquids
- Resistant to acids, alkalis as well as petrol and diesel
- Can be rolled tight and is easy to store



ANTI-SLIP MATS, PADS

- Prevent scratching and shifting of loads
- Extremely sturdy and resistant to tearing
- 4.5 mm thick
- Very high friction coefficient of up to 10 t/m²
- Depending on friction surface – μ 0.94-1.49
- Suitable as an intermediate protection layer
- Easy to handle and light
- Reusable
- Stores compactly, fits any drawer

GENERAL INFORMATION

- Our general terms and conditions, available at www.aluca.de, apply.
 - Subject to technical changes.
 - We cannot be held responsible for misprints or errors.
 - Weight details are rounded to the nearest whole unit.
- Decorative items shown on illustrations do not form part of the scope of delivery.
 - Reproduction - even in part - is permissible only with the approval of the publisher.





Lightweight mobile storage systems

ALUCA GmbH

Westring 1
74538 Rosengarten
Germany

T +49 791 95040-0
F +49 791 95040-20
E info@aluca.de

Distributed by

www.aluca.de